

## Electric motor 6AMY355M4

General-purpose squirrel-cage induction motor 6AMY355M4 series are intended for continuous operation with AC mains, rated voltage 380/660 V, frequency of 50. If necessary for a Customer, the motors can be produced for other rated voltage up to 690 V at 50 Hz or 60 Hz frequency.

Mounting methods IM1001 (B3).

Electric motor is manufactured in climatic version Y2 (moderate climate). Degree of protection of the casing and terminal box is IP54.

Cooling method is IC0141.

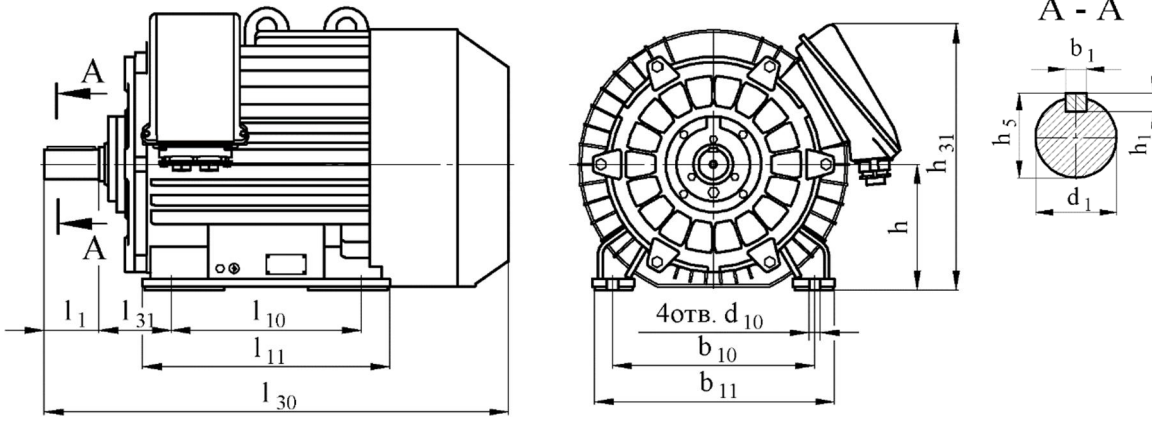
Electric motor is reversible.

Technical specification, mounting and coupling dimensions of electric motor are given in Table 1 and 2, on Fig.2 and 2a.

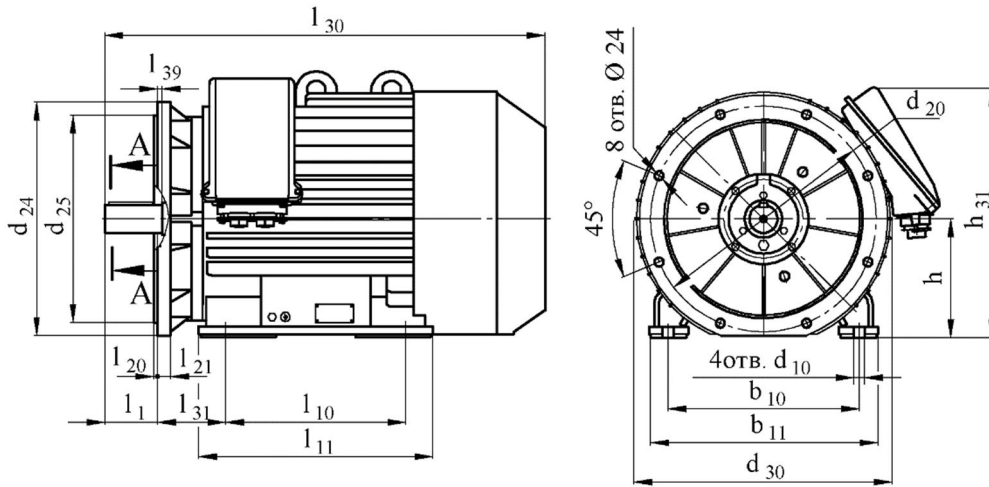
Table 1

Type of electric motor	Power, kW	Slip, %	Rotational speed r.p.m.	Efficiency, %	cos $\varphi$	Rated current at U=380 V, A	M <sub>max</sub> / M <sub>rat</sub>	M <sub>start</sub> / M <sub>rat</sub>	M <sub>min</sub> / M <sub>rat</sub>	I <sub>start</sub> / I <sub>rat</sub>	Weight, kg IM 1001
6AMY355M4	315	1,0	1500	95	0,88	571	3,0	2,0	1,0	7,2	1797

### Mounting and coupling dimensions for IM1001



### Mounting and coupling dimensions for IM2001



### Mounting and coupling dimensions for IM3011

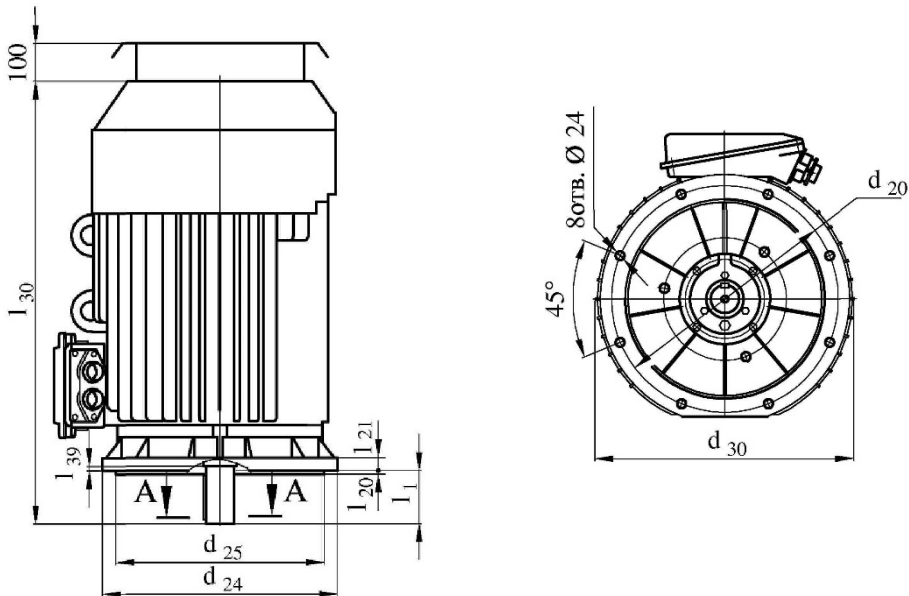


Figure 2a 6AMY355M4

Table 2

Dimensions:  $l_{39}=0$ ;  $l_{20}=6$ ;  $d_{22}=24$ ;  $l_{21}=25$ .

Type of electric motor	Overall dimensions				Mounting and coupling dimensions, mm													
	$l_{30}$	$h_{31}$	$d_{24}$	$d_{30}$	$l_1$	$l_{10}$	$l_{11}$	$l_{31}$	$d_1$	$d_{10}$	$d_{20}$	$d_{25}$	$b_1$	$b_{10}$	$b_{11}$	$h$	$h_1$	$h_5$
6AMY355M4	1635	805	800	770	210	560	620	254	100	28	740	680	28	610	730	355	16	106

Tolerances for mounting and coupling dimensions are according to GOST 8592.

On agreement with the customer, electric motors can be manufactured with different mounting and coupling dimensions.