

## Electric motors 6AMY355M6

General-purpose squirrel-cage induction motors 6AMY355M6 are intended for continuous operation with AC mains, rated voltage 380/660 V, frequency of 50 or 60 Hz. If necessary for a Customer, the motors can be produced for other rated voltage up to 690 V at 50 Hz or 60 Hz frequency.

Mounting methods IM1001 (B3), IM2001 (B3/B5), IM3011 (B5).

Electric motors are manufactured in climatic versions Y2, Y3; T2, YXJI1, OM5. Degree of protection of the casing and terminal box is IP54.

Cooling method is IC0141.

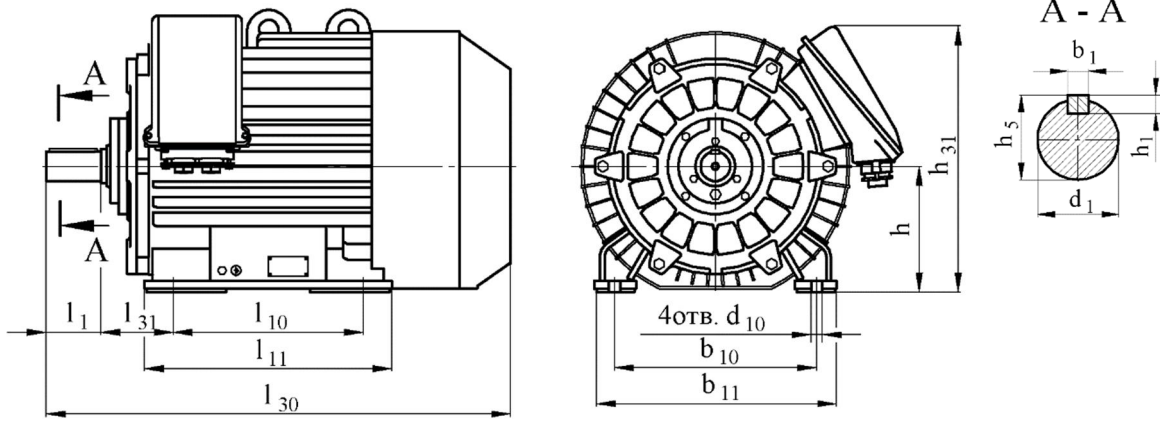
Electric motors are reversible.

Technical specification, mounting and coupling dimensions of electric motors are given in Table 1 and 2, on Fig.2 and 2a.

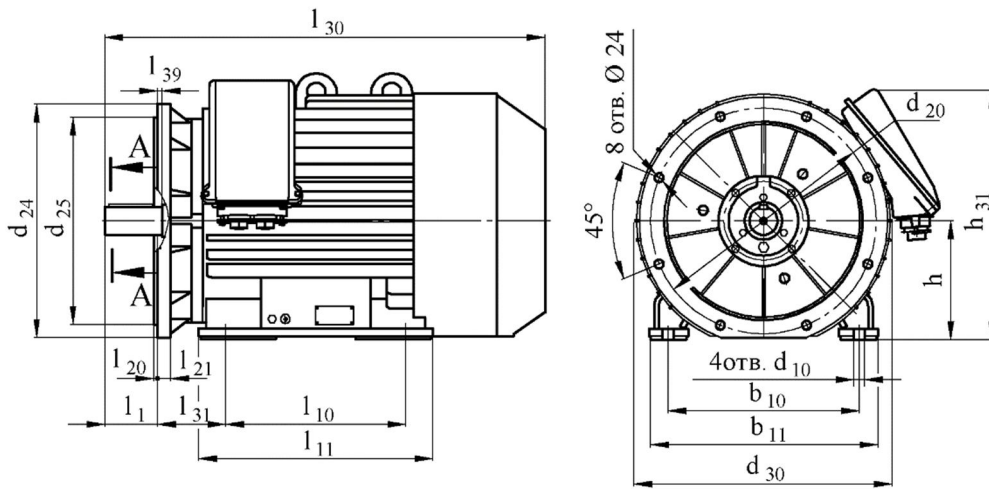
Table 1

Type of electric motor	Power, kW	Slip, %	Rotational speed r.p.m.	Efficiency, %	cos $\varphi$	Rated current at U=380 V, A	M <sub>max</sub> / M <sub>rat</sub>	M <sub>start</sub> / M <sub>rat</sub>	M <sub>min</sub> / M <sub>rat</sub>	I <sub>start</sub> / I <sub>rat</sub>	Weight, kg IM 1001
6AMY355M6	200	1,0	1000	94,5	0,85	375	2,9	2,0	1,0	7,1	1589

### Mounting and coupling dimensions for IM1001



### Mounting and coupling dimensions for IM2001



### Mounting and coupling dimensions for IM3011

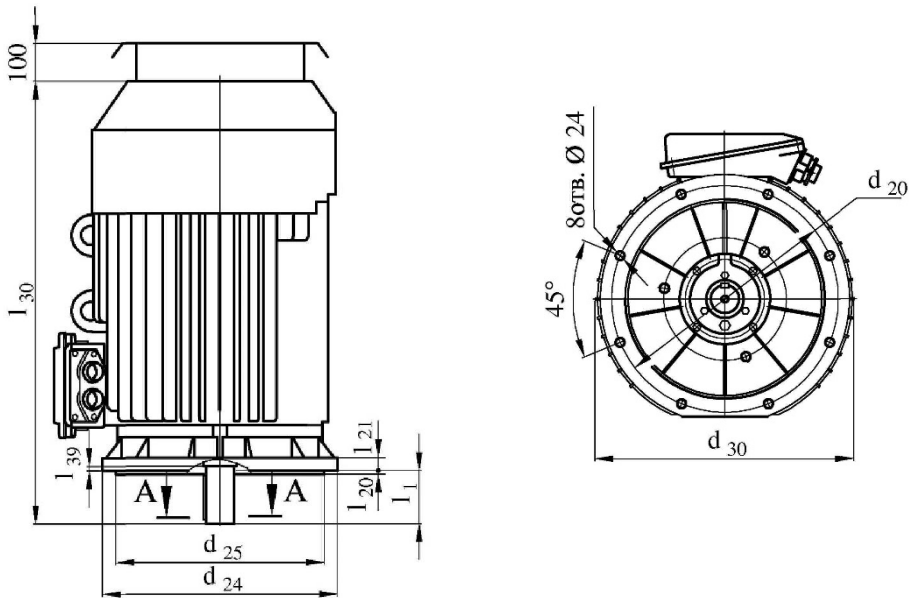


Figure 2a 6AMY355M6

Dimensions:  $l_{39}=0$ ;  $l_{20}=6$ ;  $d_{22}=24$ ;  $l_{21}=25$ .

Tolerances for mounting and coupling dimensions are according to GOST 8592.

Type of electric motor	Overall dimensions				Mounting and coupling dimensions, mm													
	$l_{30}$	$h_{31}$	$d_{24}$	$d_{30}$	$l_1$	$l_{10}$	$l_{11}$	$l_{31}$	$d_1$	$d_{10}$	$d_{20}$	$d_{25}$	$b_1$	$b_{10}$	$b_{11}$	$h$	$h_1$	$h_5$
6AMY355M6	1485	805	800	770	210	560	620	254	100	28	740	680	28	610	730	355	16	106

On agreement with the customer, electric motors can be manufactured with different mounting and coupling dimensions.